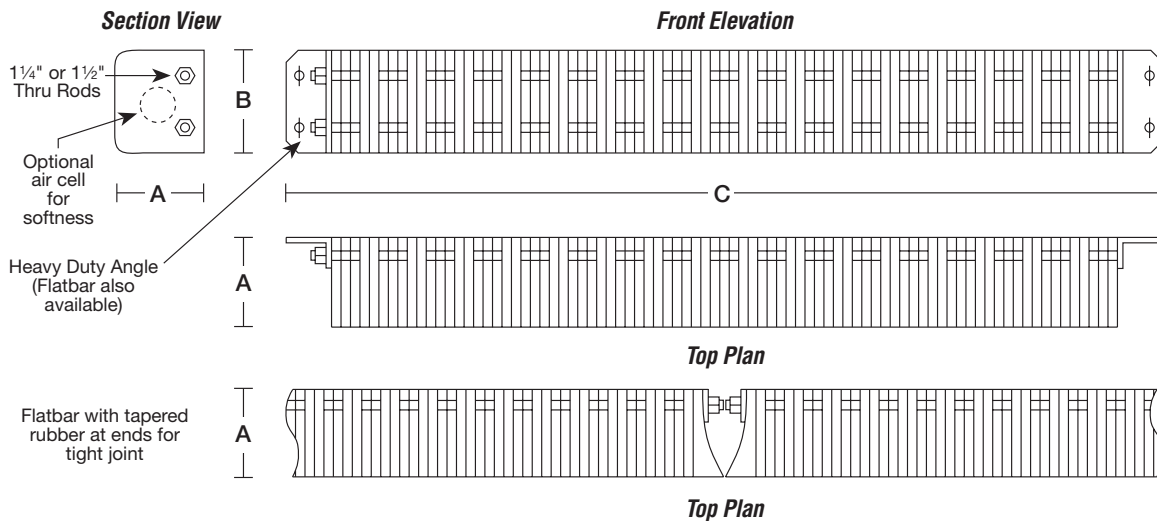


LAMINATED D-GUARD FENDERS

MODEL 114D — DESIGN SPECIFICATIONS



Features

- More economical, durable, and practical than virgin rubber products
- Reinforced rubber D-guard sections are compressed onto steel rods and secured with heavy-duty flatbar or angle
- Weld tabs are compressed onto steel rods and are welded directly to hull (see page 17 for weld-tab specifications)
- No need to incur costs associated with pinning extruded rubber into channel
- Each weld tab floats and works independent of other weld tabs thereby providing quick installation on irregular and damaged hulls
- Rubber is tapered at ends to provide tight joint when two or more units are used
- Tough plies of reinforced rubber virtually eliminates chipping, unlike extruded and molded rubber
- 100% of rubber content is certified to be recycled from post-consumer waste
- Pre-curved sections available

Standard Sizes

- Schuyler manufactures D-Guard Fenders with or without a cylindrical or D-shaped bore. The variable size and shape of the bore, if required, will give you the specific physical characteristics needed.
- Standard Sizes are noted below. Please specify size of bore, if required, when ordering. Also note that Schuyler has the capability to manufacture non-standard D-Guard Sizes.

PART NO.	A	B	C	WT LBS PER LINEAL FT
SR114D 0606	6"	6"	12"	25
SR114D 0609	6"	9"		36
SR114D 0707	7"	7"		33
SR114D 0808	8"	8"		40
SR114D 0810	8"	10"	to	44
SR114D 0909	9"	9"	240"	45
SR114D 1010	10"	10"		50

PART NO.	A	B	C	WT LBS PER LINEAL FT
SR114D 0404	4"	4"	12"	10
SR114D 0405	4"	5"		11
SR114D 0406	4"	6"		14
SR114D 0408	4"	8"		20
SR114D 0410	4"	10"	to	26
SR114D 4510	4.5"	10"	240"	27
SR114D 4512	4.5"	12"		32
SR114D 0606	6"	6"	240"	23
SR114D 0610	6"	10"		36
SR114D 0612	6"	12"		38

See insert for Load Deflection, Energy Absorption, and Architectural Specifications.

SCHUYLER MARITIME COMPANY, LLC.
 204 Ida Road
 Broussard, Louisiana 70518
866-347-9445 TOLL FREE

Phone: 337/248-1426
 Fax: 337/837-3610
 Website: www.schuylermaritime.com
 email: sales@schuylermaritime.com



PROTECTION SINCE 1950

