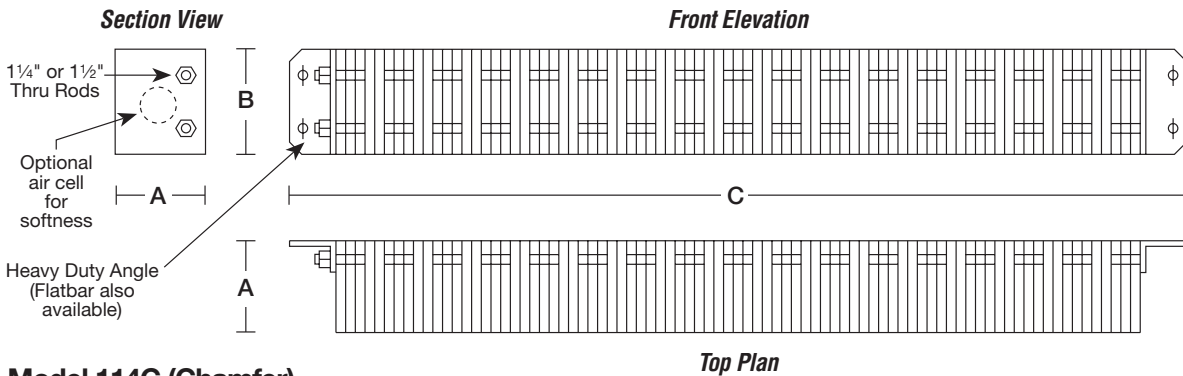


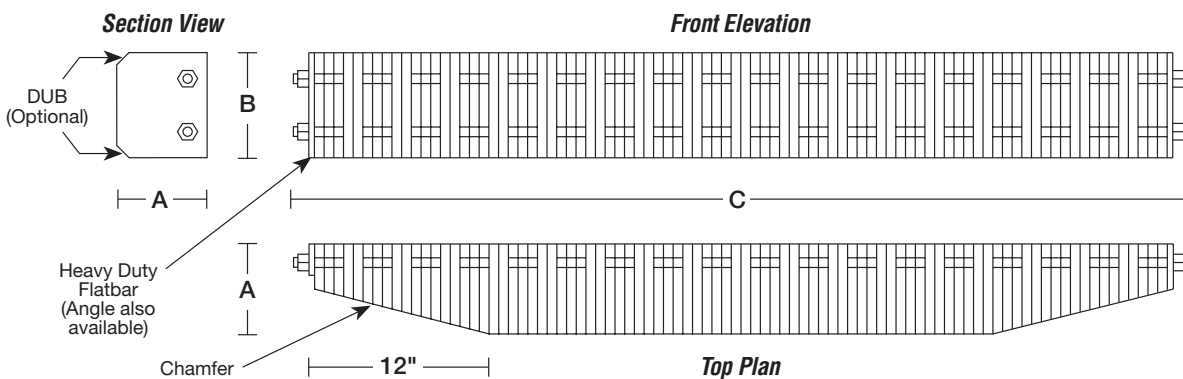
RECTANGULAR SIDE FENDERS

MODEL 114 SERIES — DESIGN SPECIFICATIONS

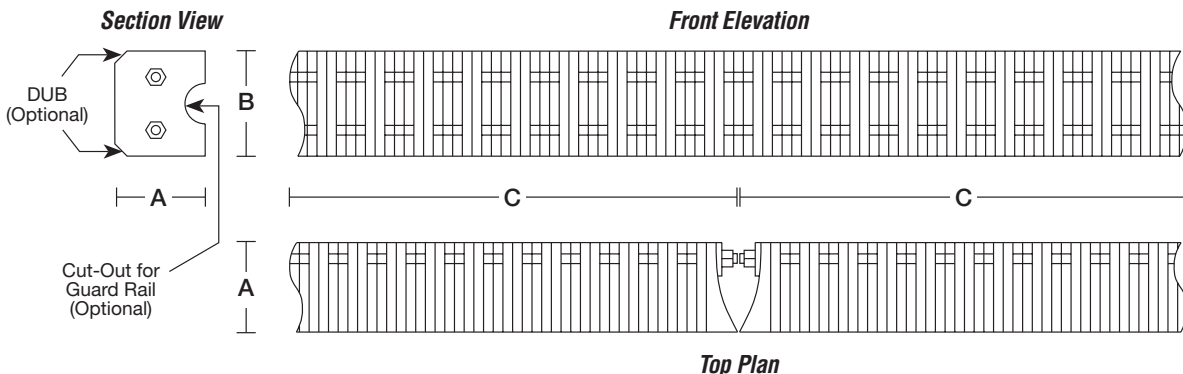
Model 114S (Standard)



Model 114C (Chamfer)



Model 114TJ (Tapered Joint)



- Schuyler manufactures Model 114 fenders with or without air cells. The variable size and shape of the air cells will give you the specific physical characteristics required.
- Tough laminated rubber sections are compressed onto steel rod and secured with heavy-duty angle or flatbar.
- Specify attachment system detail when placing order (see page 17)
- Sections can be pre-curved to fit radius of any corner.
- See insert for Load Deflection, Energy Absorption, and Architectural Specifications.

Standard Sizes

A	B	C
6" to 22"	10" to 120"	12" to 240"

SCHUYLER MARITIME COMPANY, LLC.

204 Ida Road
Broussard, Louisiana 70518
866-347-9445 TOLL FREE

Phone: 337/248-1426
Fax: 337/837-3610
Website: www.schuylermaritime.com
email: sales@schuylermaritime.com



PROTECTION
SINCE 1950

